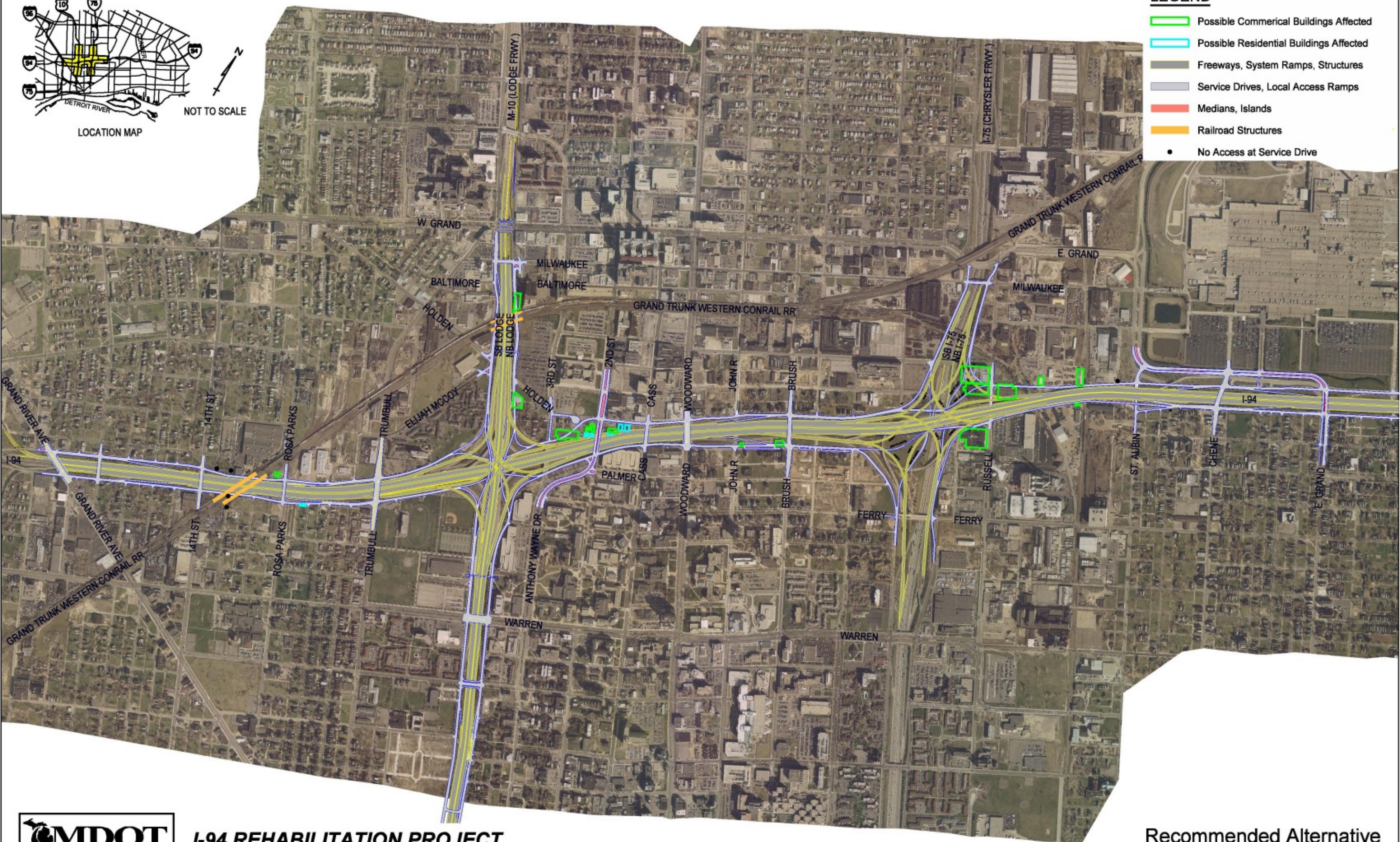


- LEGEND**
- ▭ Possible Commerical Buildings Affected
  - ▭ Possible Residential Buildings Affected
  - ▭ Freeways, System Ramps, Structures
  - ▭ Service Drives, Local Access Ramps
  - ▭ Medians, Islands
  - ▭ Railroad Structures
  - No Access at Service Drive



**I-94 REHABILITATION PROJECT**

Recommended Alternative  
and Potential Impacts