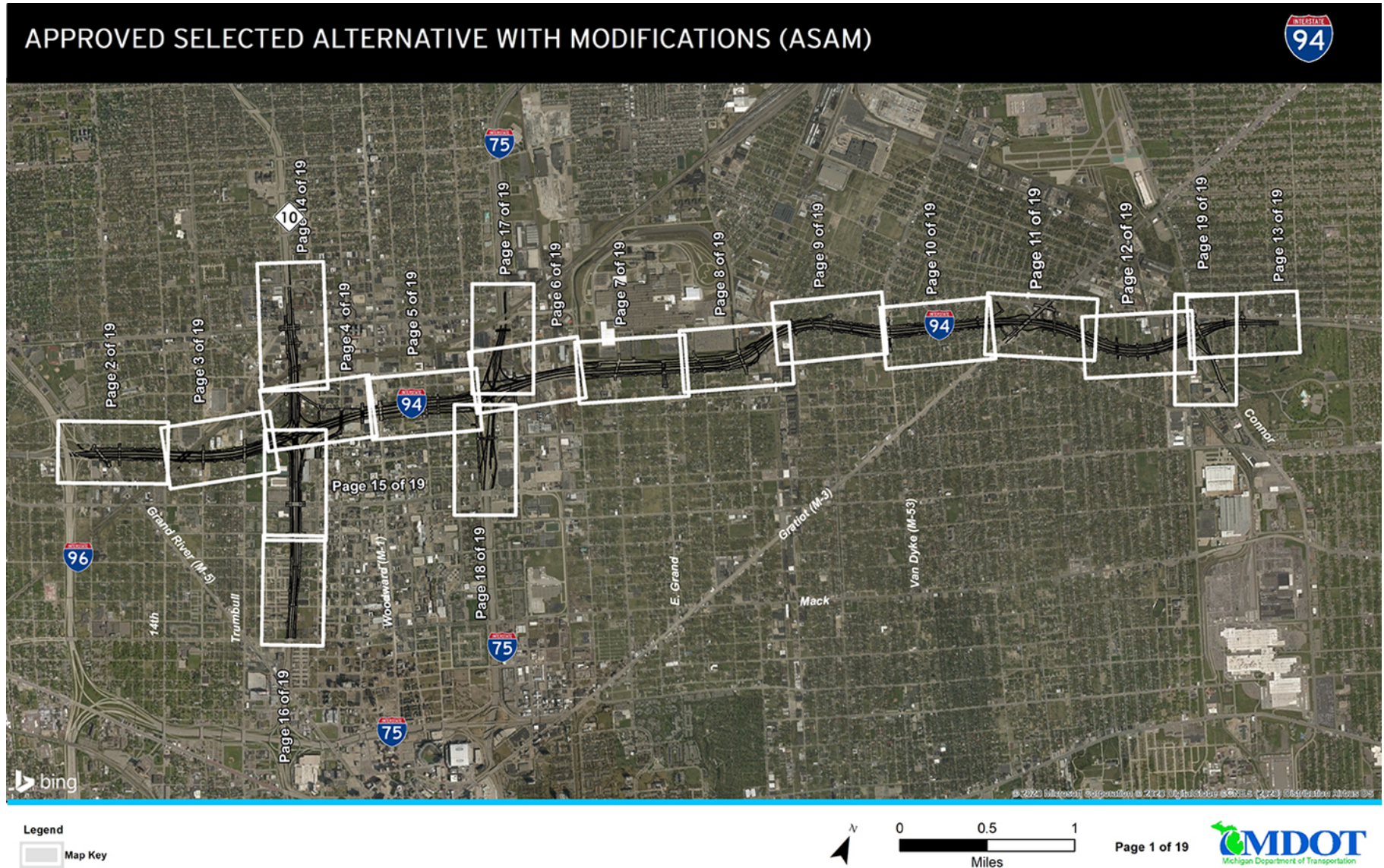




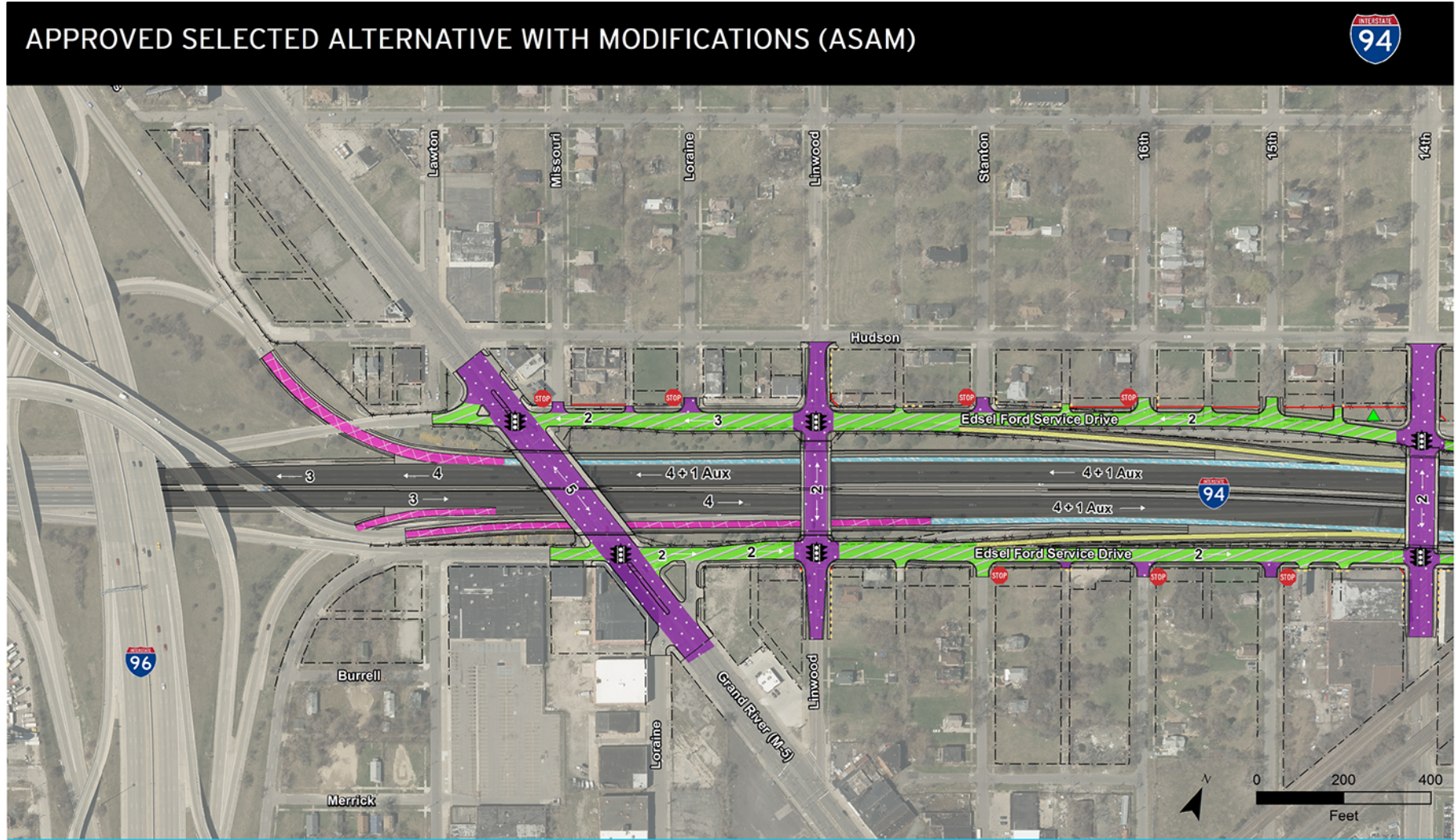
## **APPENDIX F.      SELECTED ALTERNATIVE – CONCEPTUAL DESIGN PLAN**

<b>F.1. Index.....</b>	<b>F-2</b>
<b>F.2. Conceptual Design Plan.....</b>	<b>F-3</b>





## APPROVED SELECTED ALTERNATIVE WITH MODIFICATIONS (ASAM)



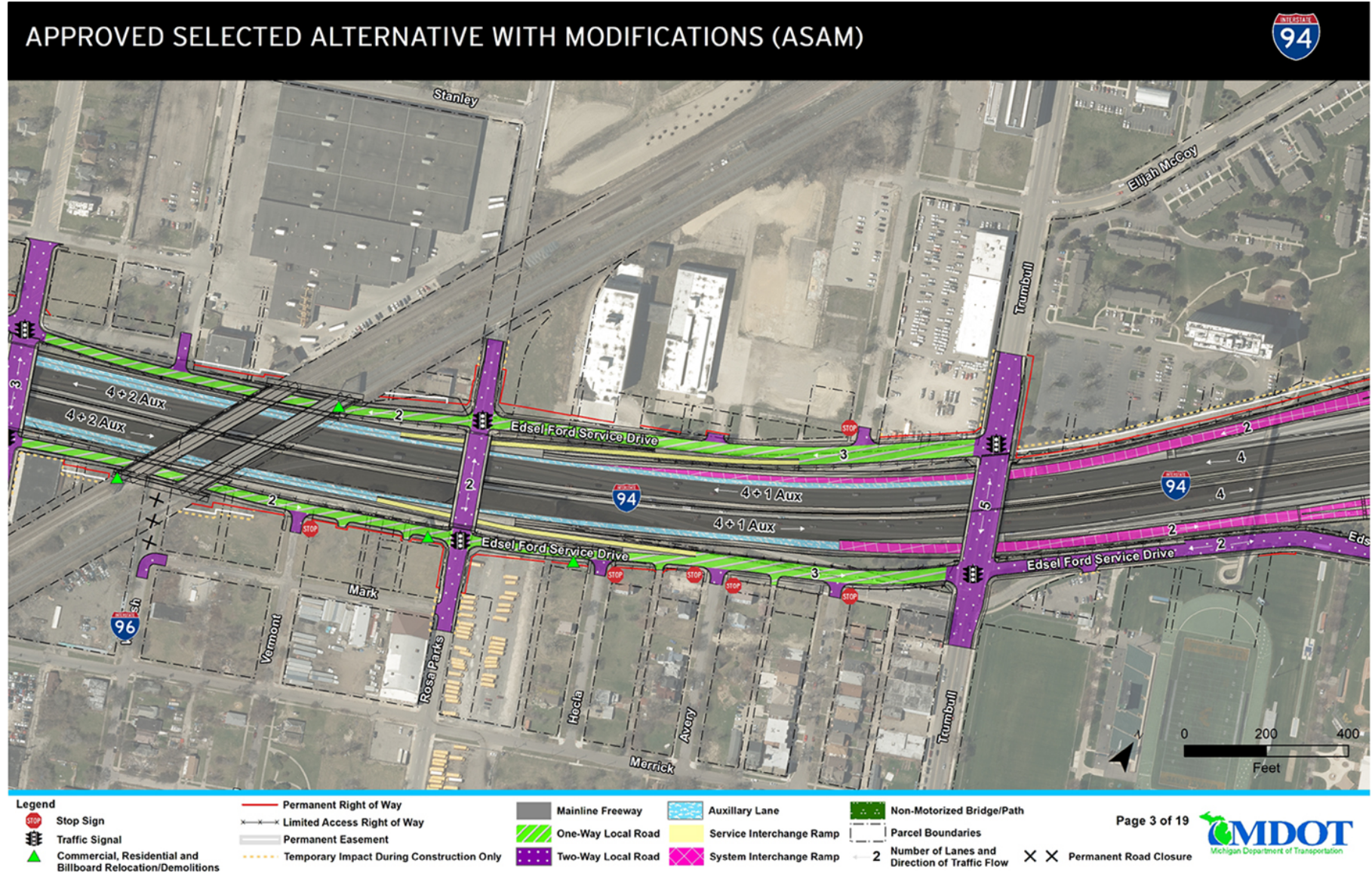
### Legend

- |  |   |                    |                          |   |
|--|---|--------------------|--------------------------|---|
| Stop Sign  | Permanent Right of Way                    | Mainline Freeway   | Auxiliary Lane           | Non-Motorized Bridge/Path                       |
| Traffic Signal   | Limited Access Right of Way               | One-Way Local Road | Service Interchange Ramp | Parcel Boundaries                               |
| Commercial, Residential and Billboard Relocation/Demolitions | Permanent Easement                        | Two-Way Local Road | System Interchange Ramp  | 2 Number of Lanes and Direction of Traffic Flow |
|  | Temporary Impact During Construction Only |                    |                          | X X Permanent Road Closure                      |

Page 2 of 19

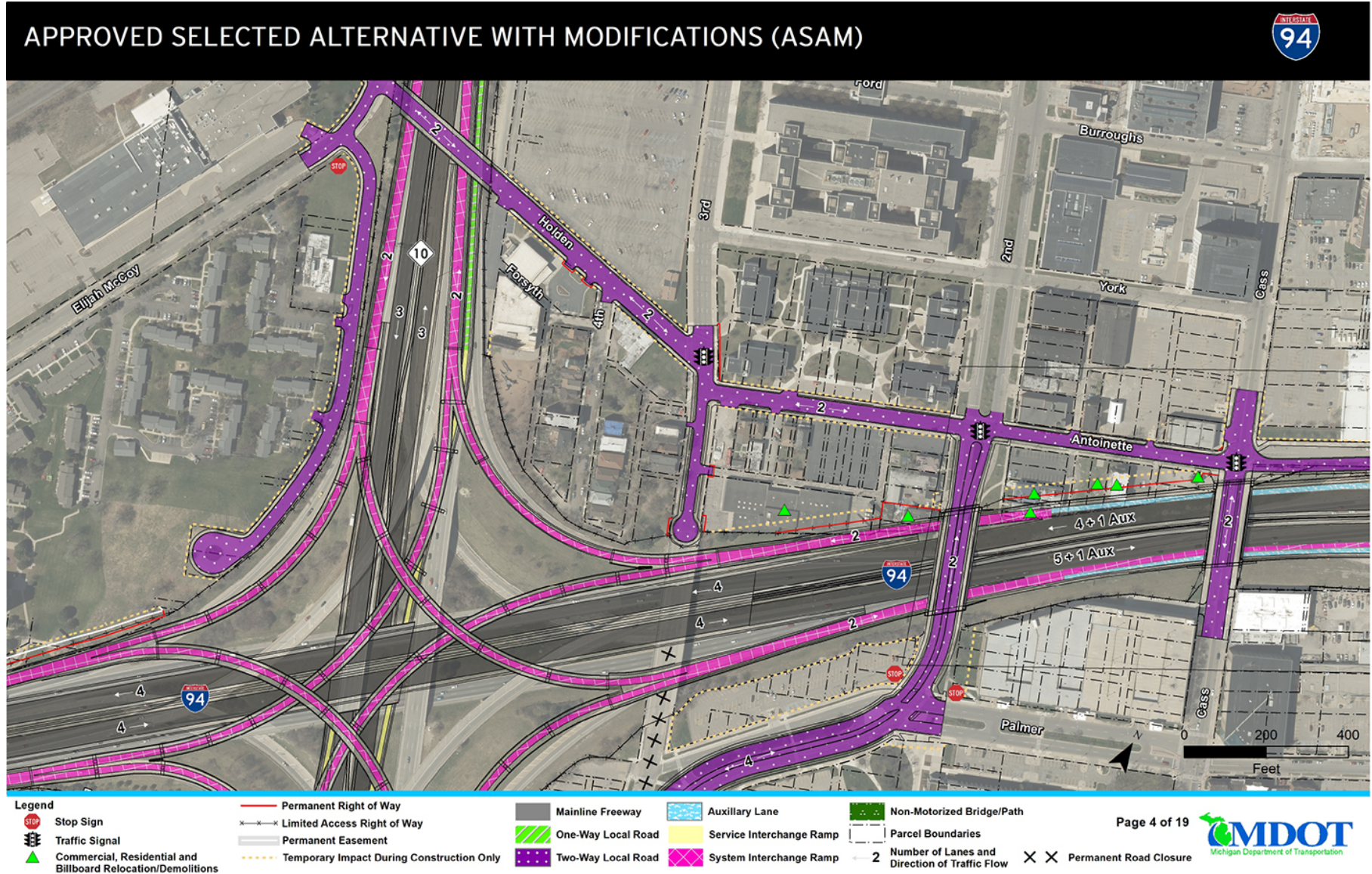


## APPROVED SELECTED ALTERNATIVE WITH MODIFICATIONS (ASAM)



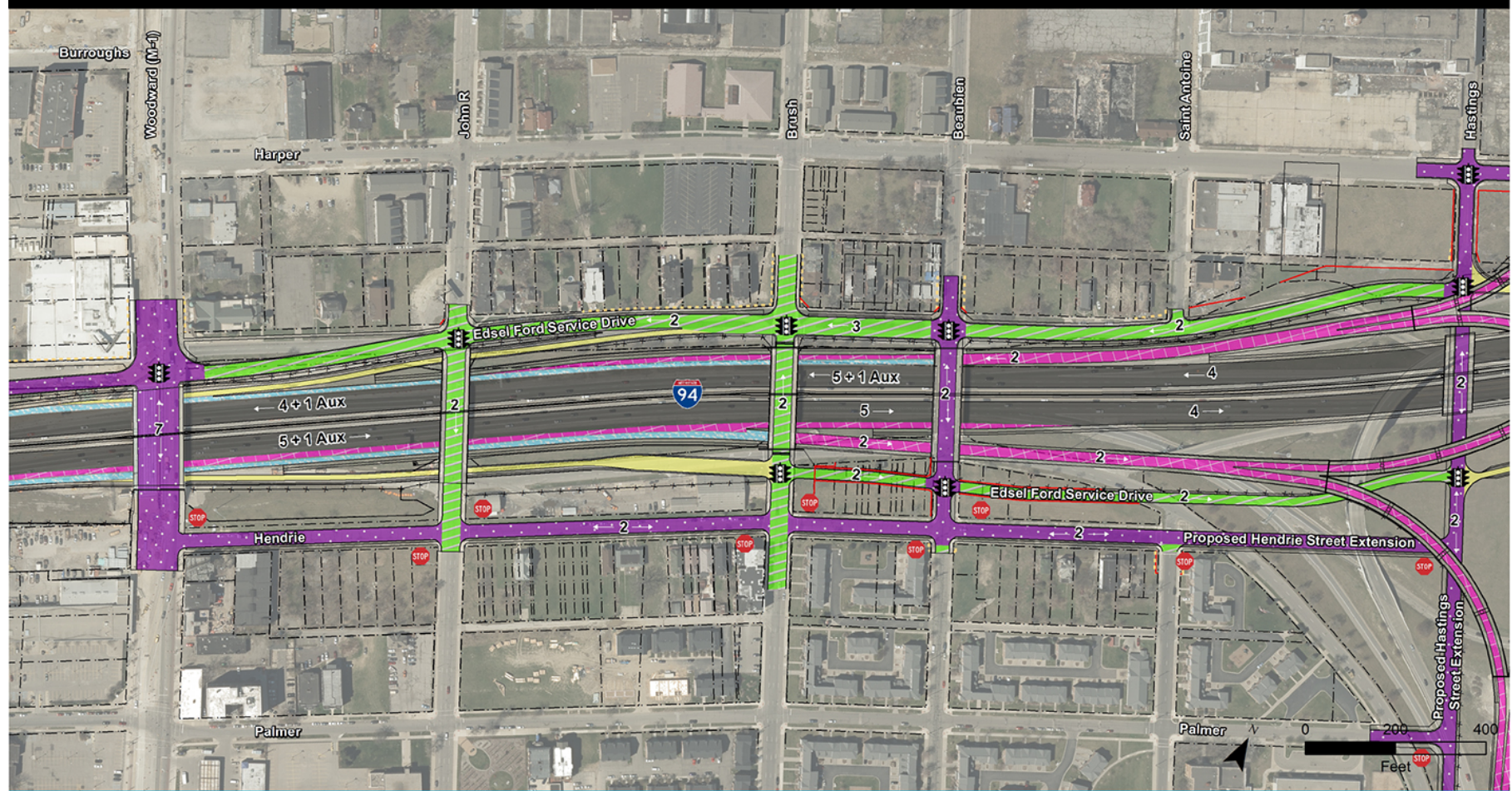


## APPROVED SELECTED ALTERNATIVE WITH MODIFICATIONS (ASAM)





## APPROVED SELECTED ALTERNATIVE WITH MODIFICATIONS (ASAM)



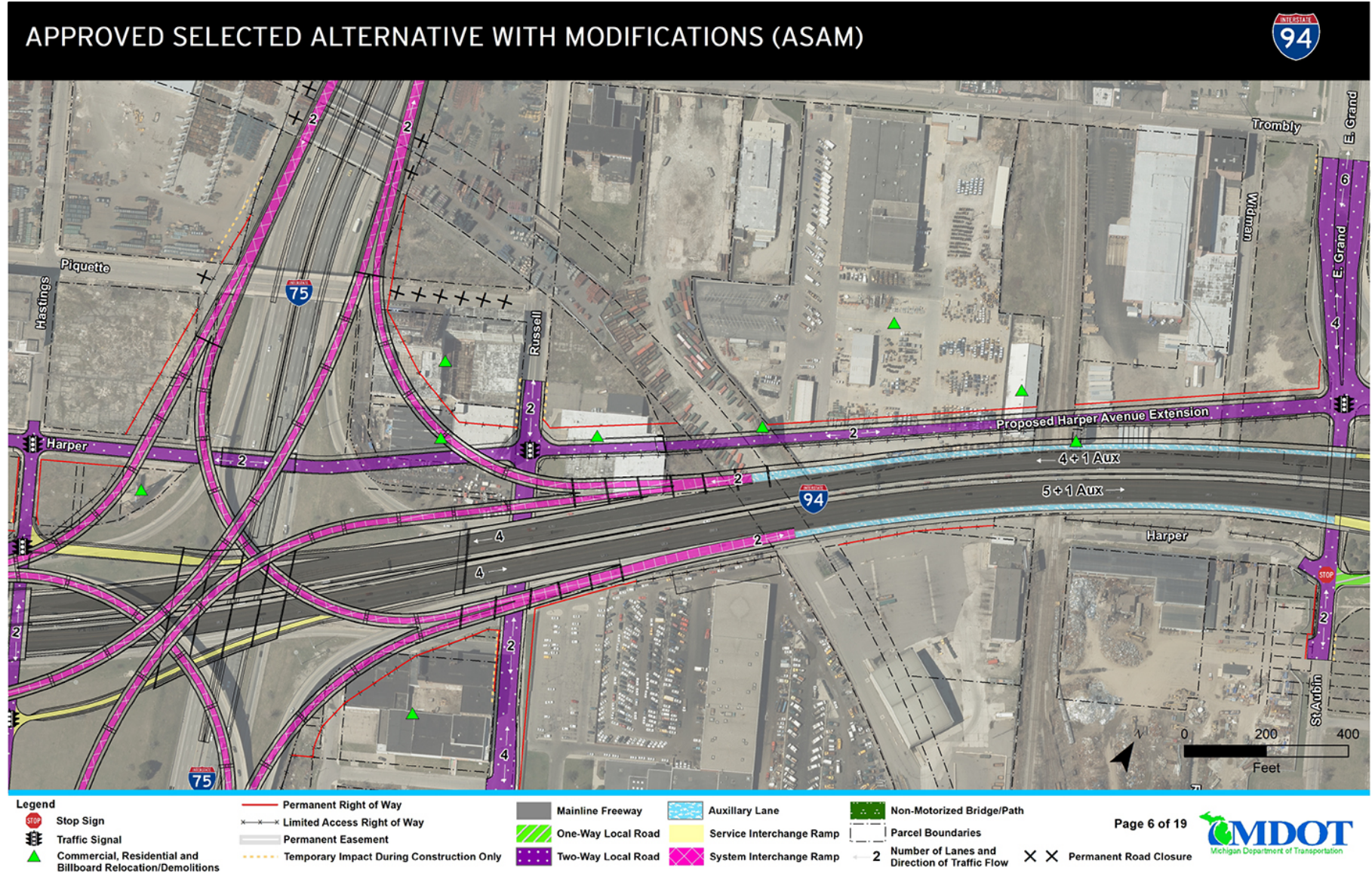
### Legend

- |  |   |                    |                          |   |
|--|---|--------------------|--------------------------|---|
| Stop Sign  | Permanent Right of Way                    | Mainline Freeway   | Auxiliary Lane           | Non-Motorized Bridge/Path                     |
| Traffic Signal   | Limited Access Right of Way               | One-Way Local Road | Service Interchange Ramp | Parcel Boundaries                             |
| Commercial, Residential and Billboard Relocation/Demolitions | Permanent Easement                        | Two-Way Local Road | System Interchange Ramp  | Number of Lanes and Direction of Traffic Flow |
|  | Temporary Impact During Construction Only |                    |                          | Permanent Road Closure                        |

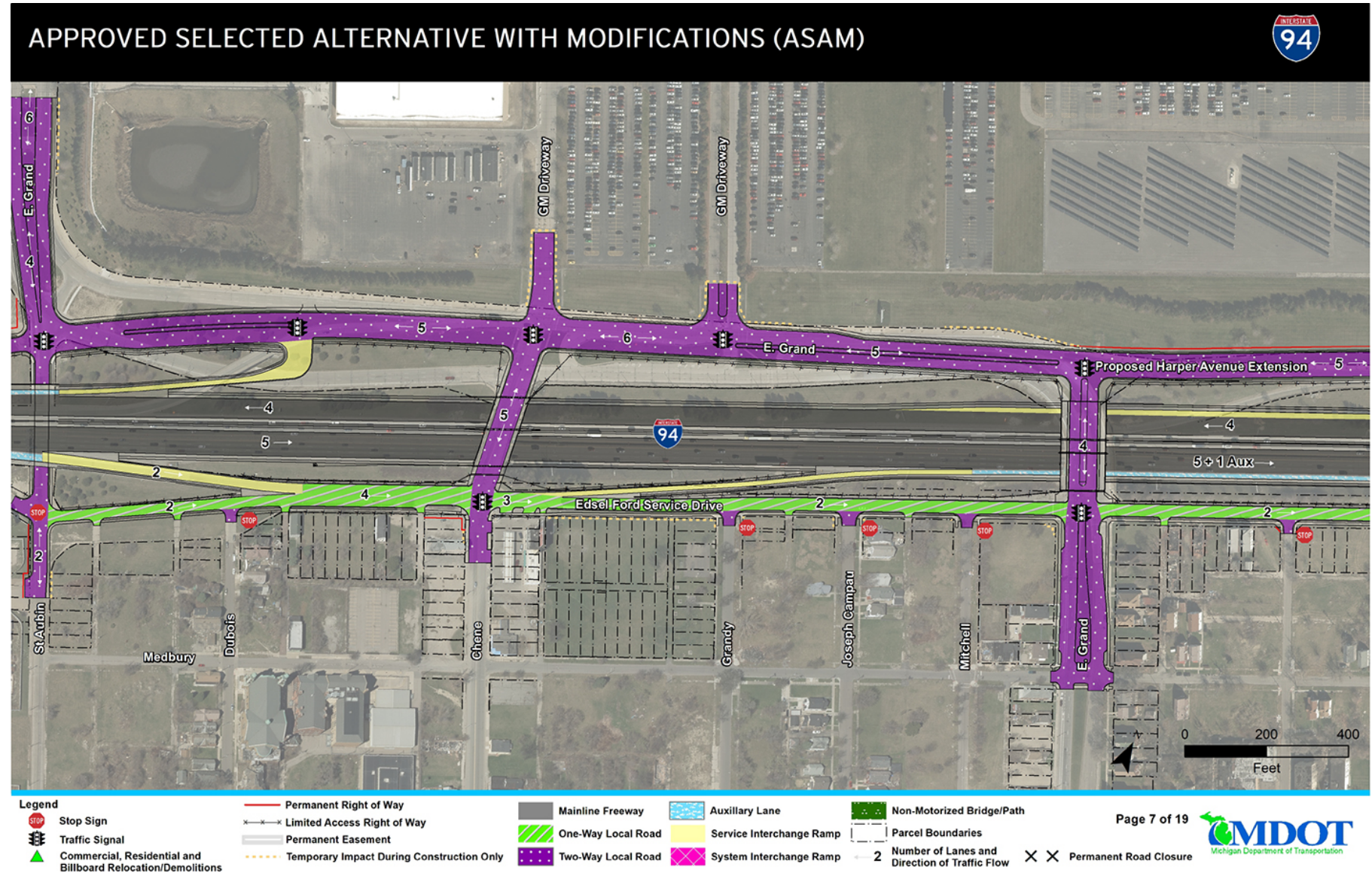
Page 5 of 19



## APPROVED SELECTED ALTERNATIVE WITH MODIFICATIONS (ASAM)

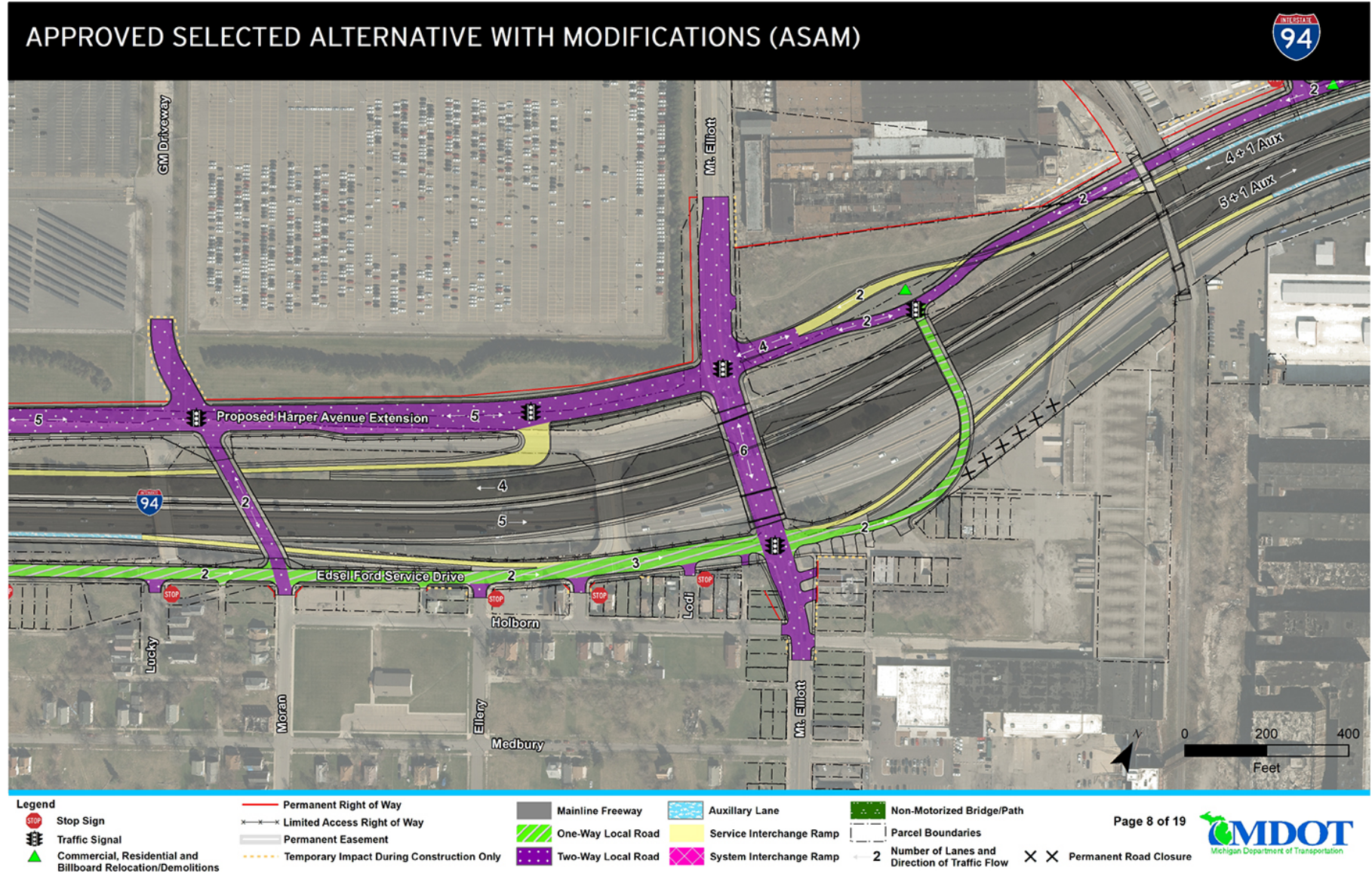






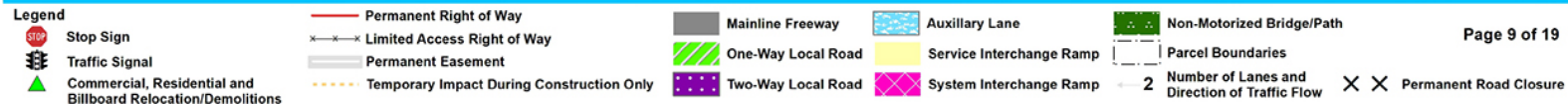
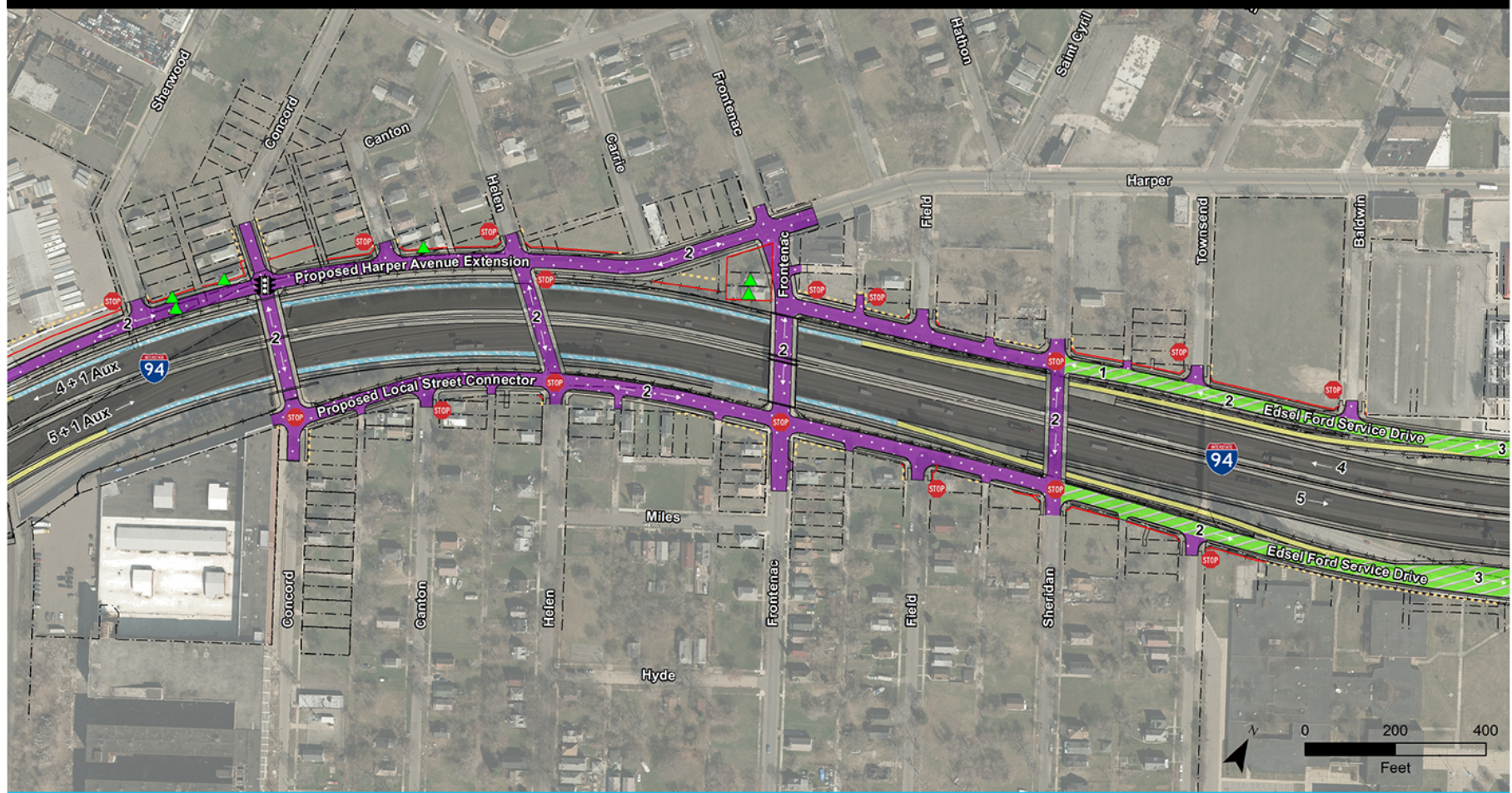


## APPROVED SELECTED ALTERNATIVE WITH MODIFICATIONS (ASAM)





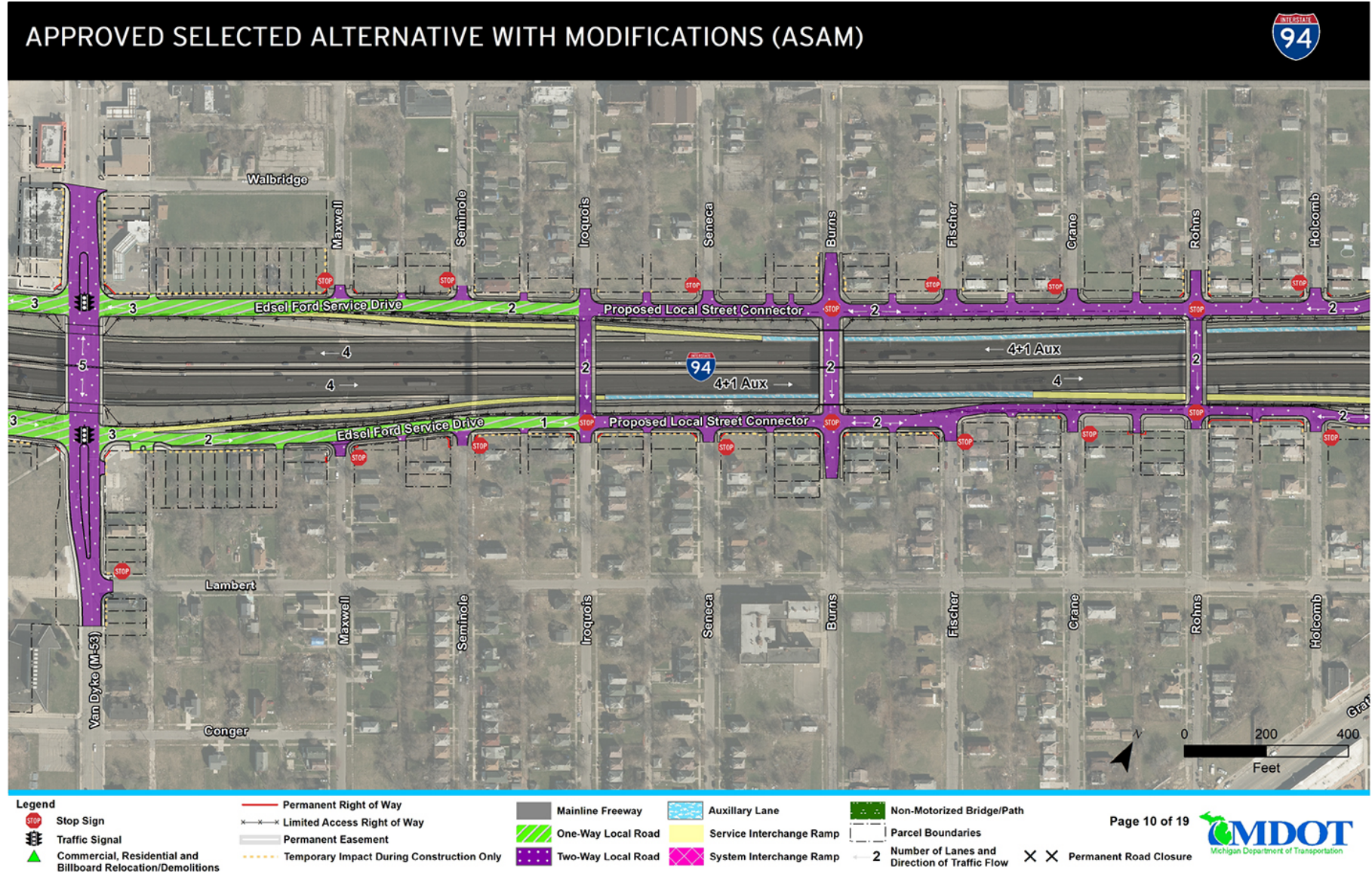
## APPROVED SELECTED ALTERNATIVE WITH MODIFICATIONS (ASAM)



Page 9 of 19

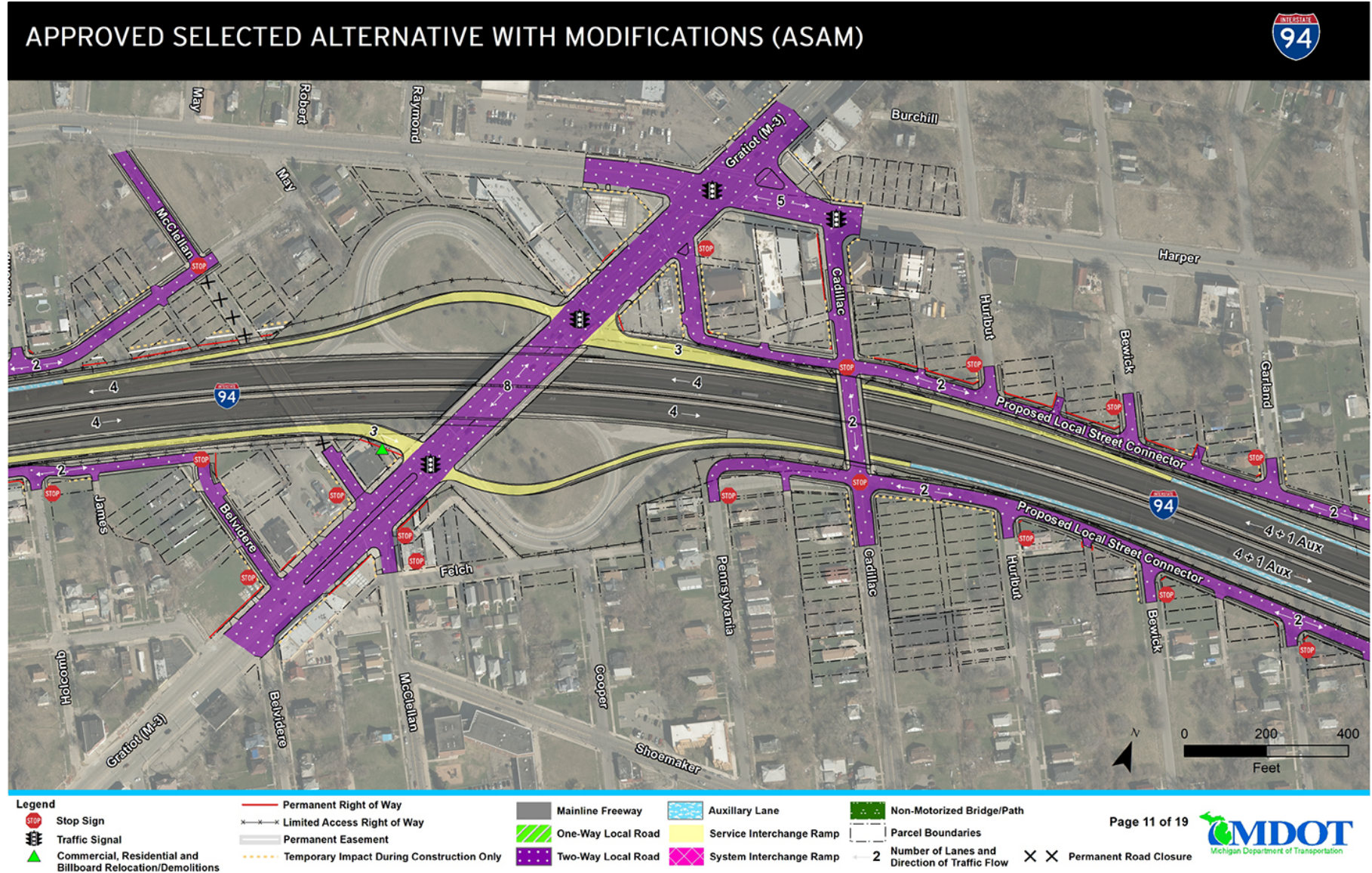


## APPROVED SELECTED ALTERNATIVE WITH MODIFICATIONS (ASAM)



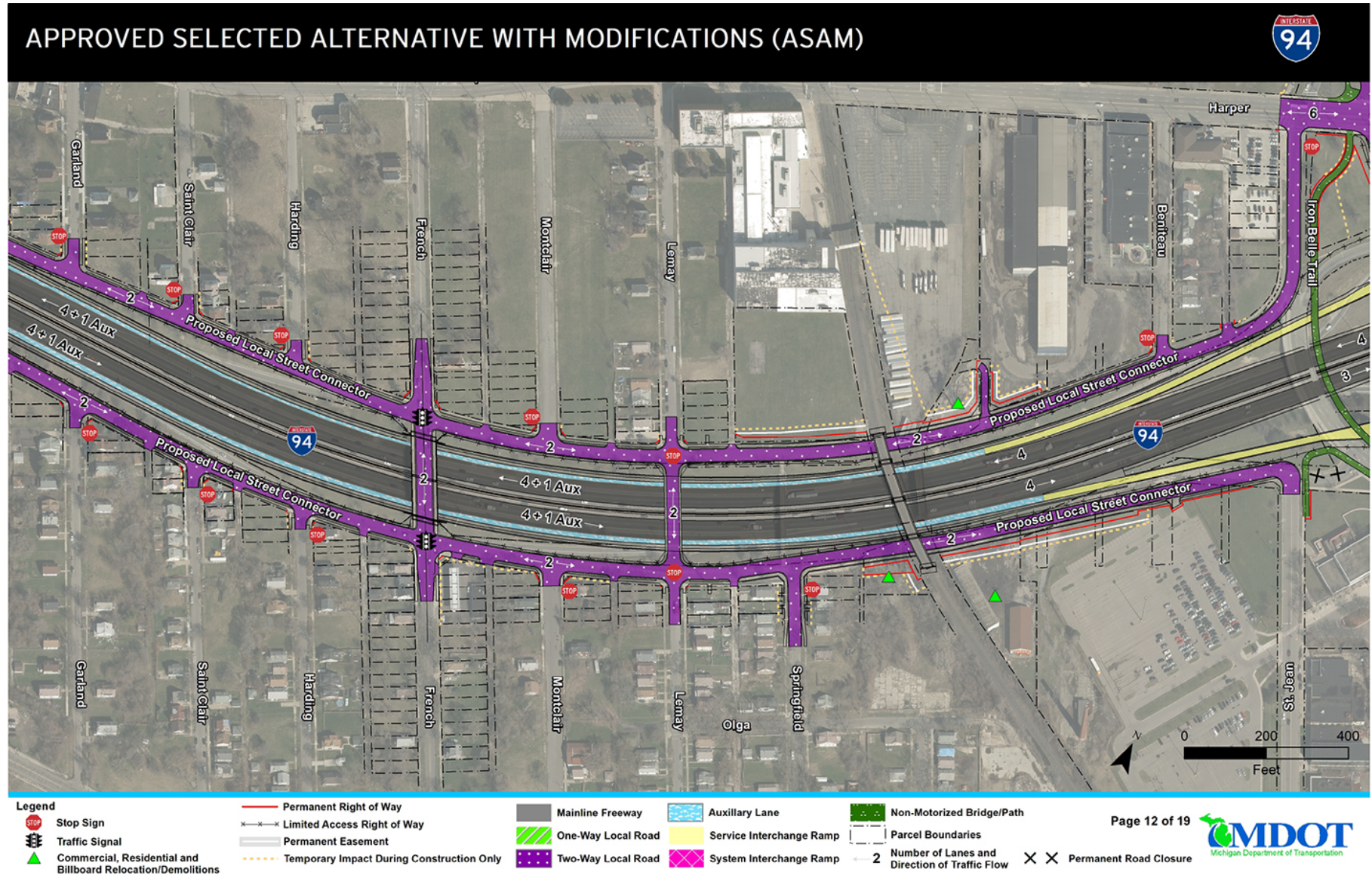


## APPROVED SELECTED ALTERNATIVE WITH MODIFICATIONS (ASAM)



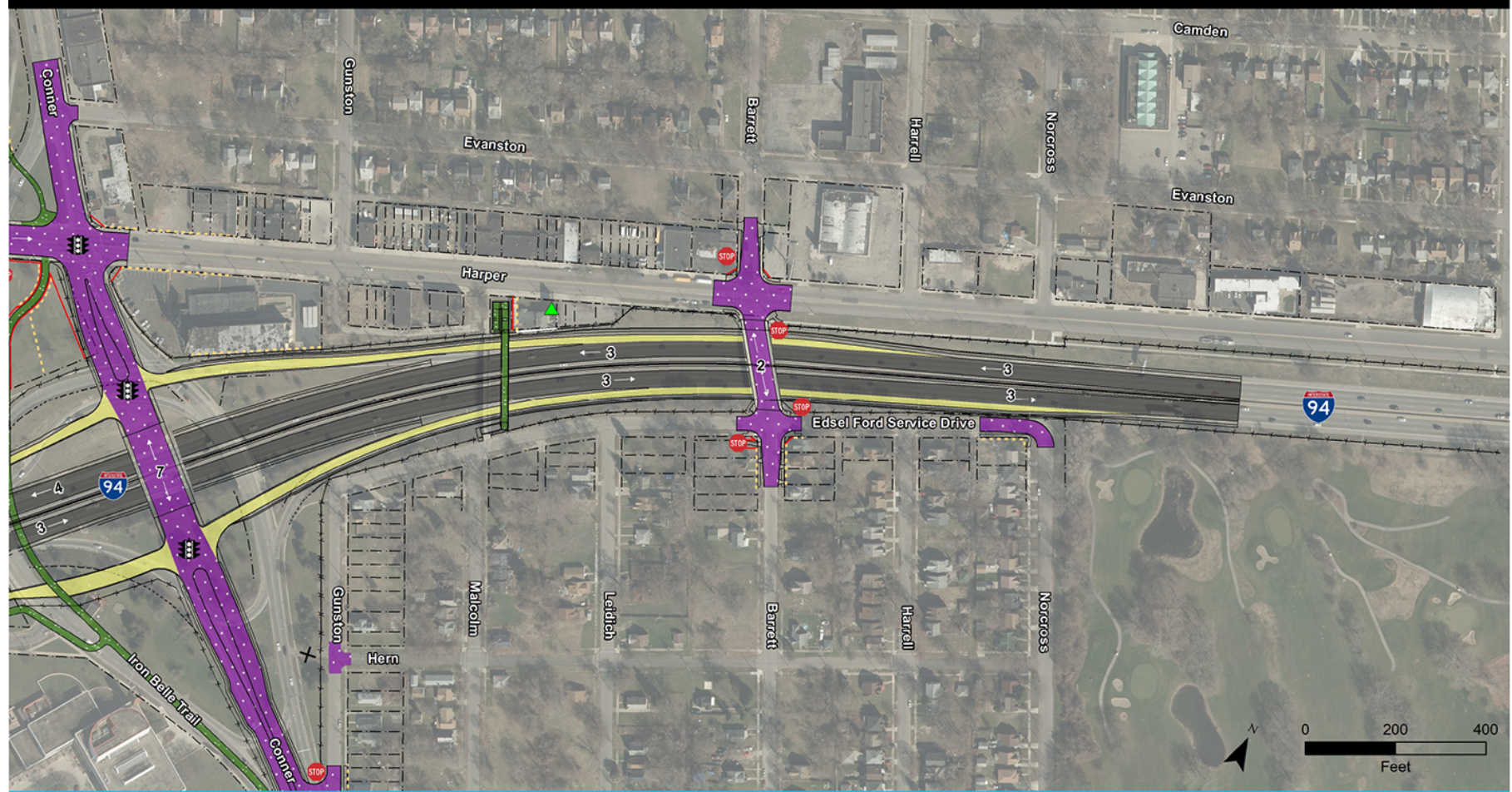


## APPROVED SELECTED ALTERNATIVE WITH MODIFICATIONS (ASAM)





## APPROVED SELECTED ALTERNATIVE WITH MODIFICATIONS (ASAM)



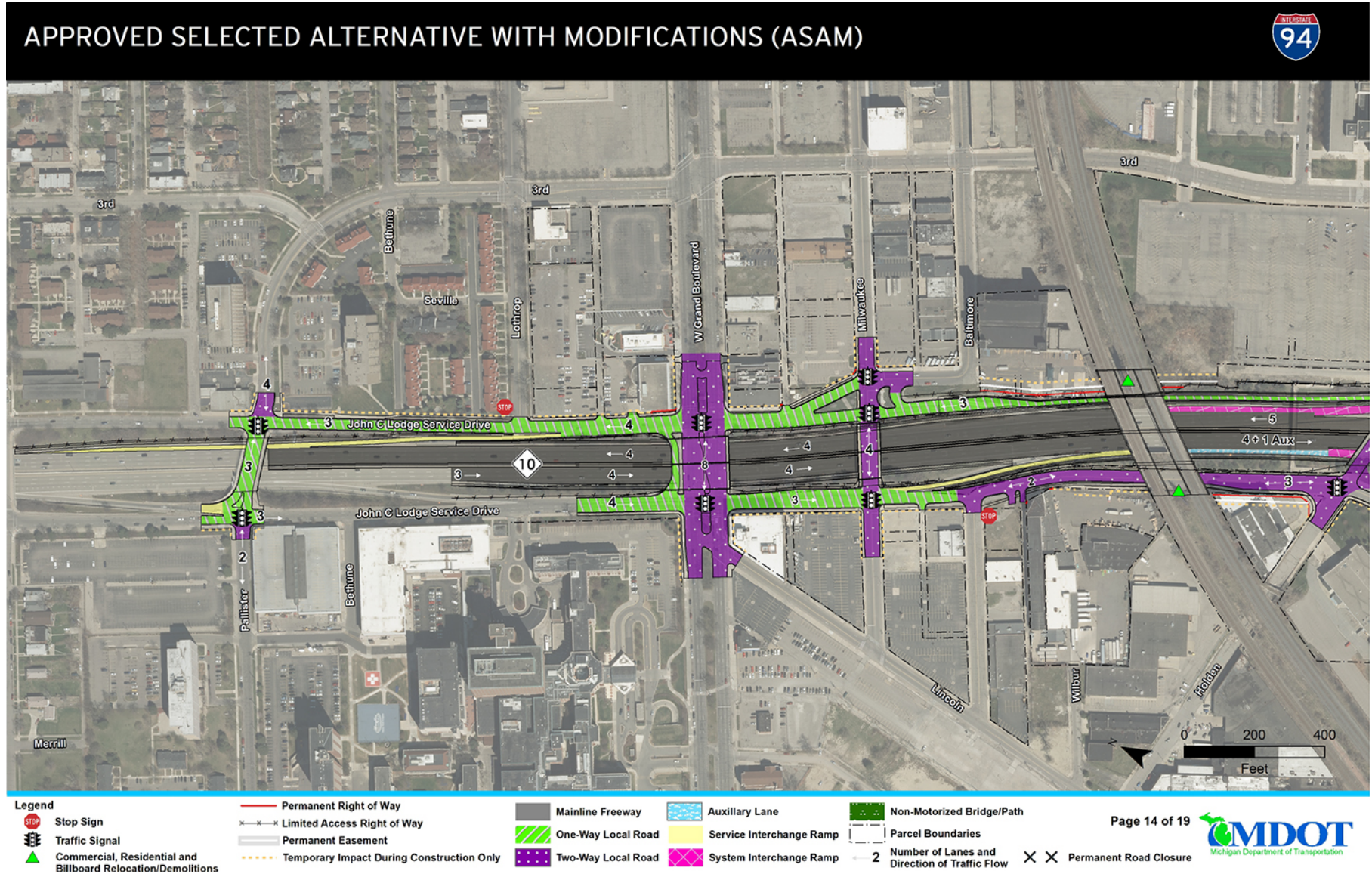
### Legend

- |  |   |                    |                          |   |
|--|---|--------------------|--------------------------|---|
| Stop Sign  | Permanent Right of Way                    | Mainline Freeway   | Auxiliary Lane           | Non-Motorized Bridge/Path                       |
| Traffic Signal   | Limited Access Right of Way               | One-Way Local Road | Service Interchange Ramp | Parcel Boundaries                               |
| Commercial, Residential and Billboard Relocation/Demolitions | Permanent Easement                        | Two-Way Local Road | System Interchange Ramp  | 2 Number of Lanes and Direction of Traffic Flow |
|  | Temporary Impact During Construction Only |                    |                          | Permanent Road Closure                          |

Page 13 of 19

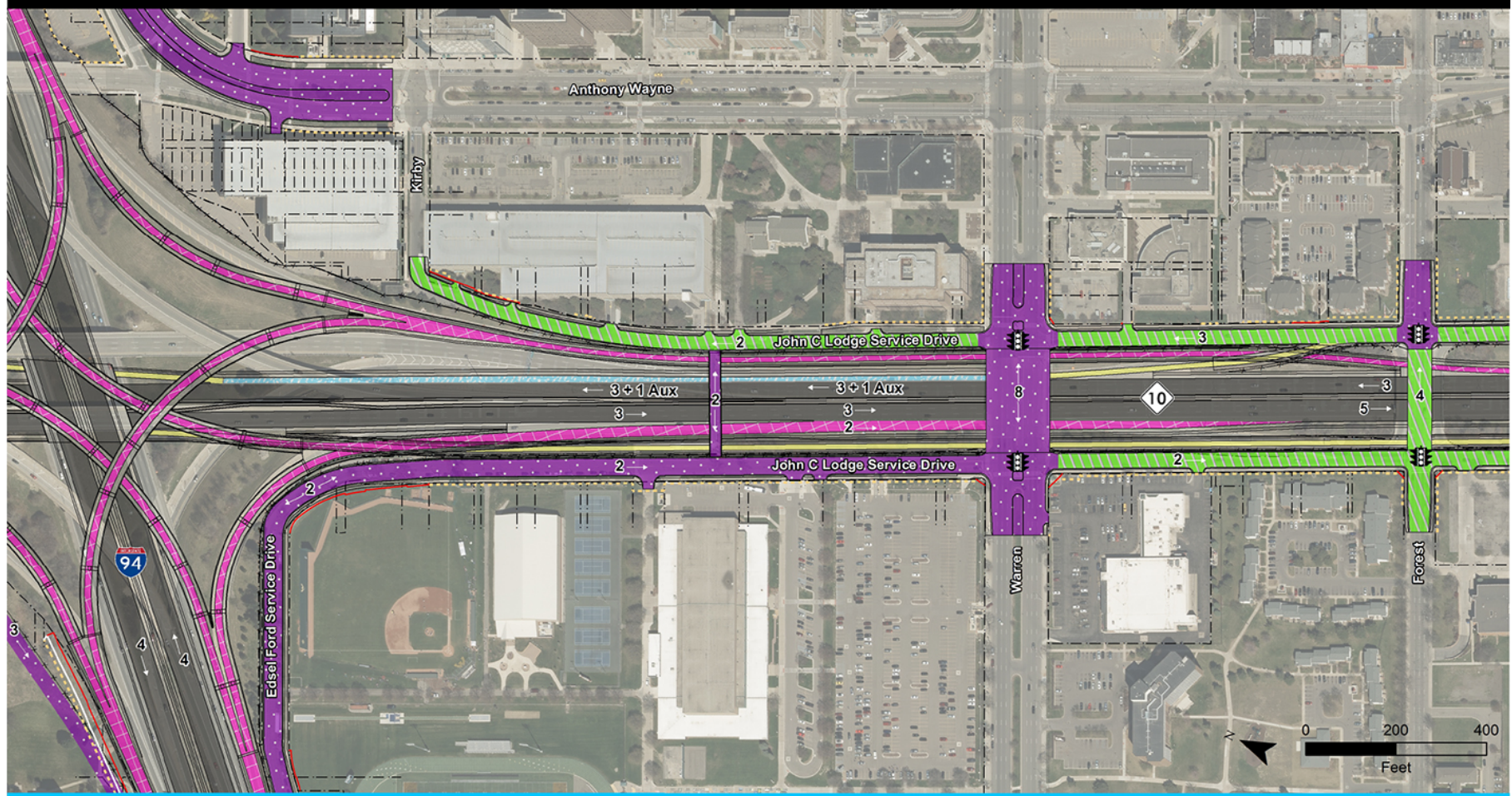


## APPROVED SELECTED ALTERNATIVE WITH MODIFICATIONS (ASAM)





## APPROVED SELECTED ALTERNATIVE WITH MODIFICATIONS (ASAM)



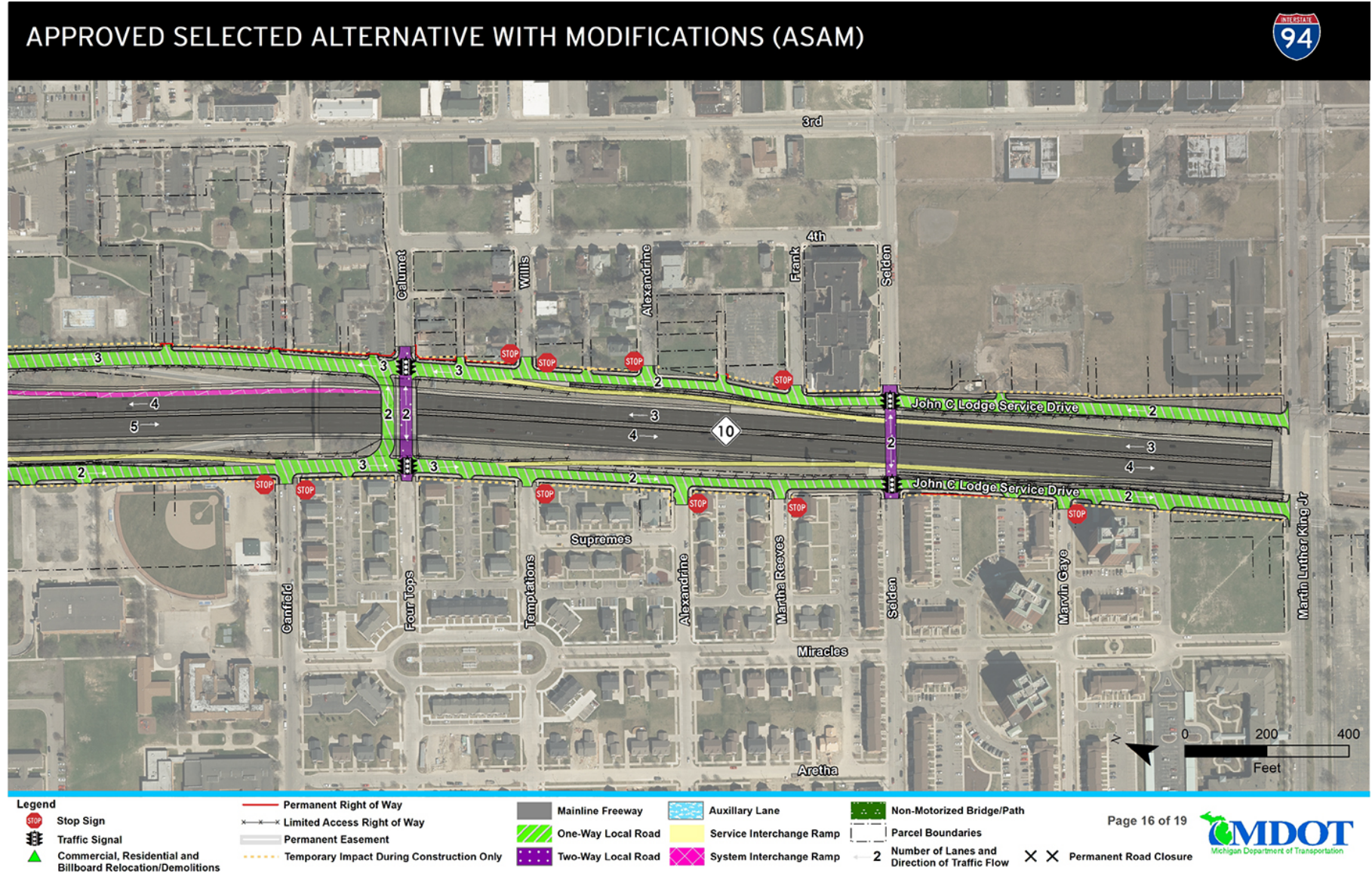
### Legend

- |  |   |                    |                          |   |
|--|---|--------------------|--------------------------|---|
| Stop Sign  | Permanent Right of Way                    | Mainline Freeway   | Auxiliary Lane           | Non-Motorized Bridge/Path                       |
| Traffic Signal   | Limited Access Right of Way               | One-Way Local Road | Service Interchange Ramp | Parcel Boundaries                               |
| Commercial, Residential and Billboard Relocation/Demolitions | Permanent Easement                        | Two-Way Local Road | System Interchange Ramp  | 2 Number of Lanes and Direction of Traffic Flow |
|  | Temporary Impact During Construction Only |                    |                          | X X Permanent Road Closure                      |

Page 15 of 19

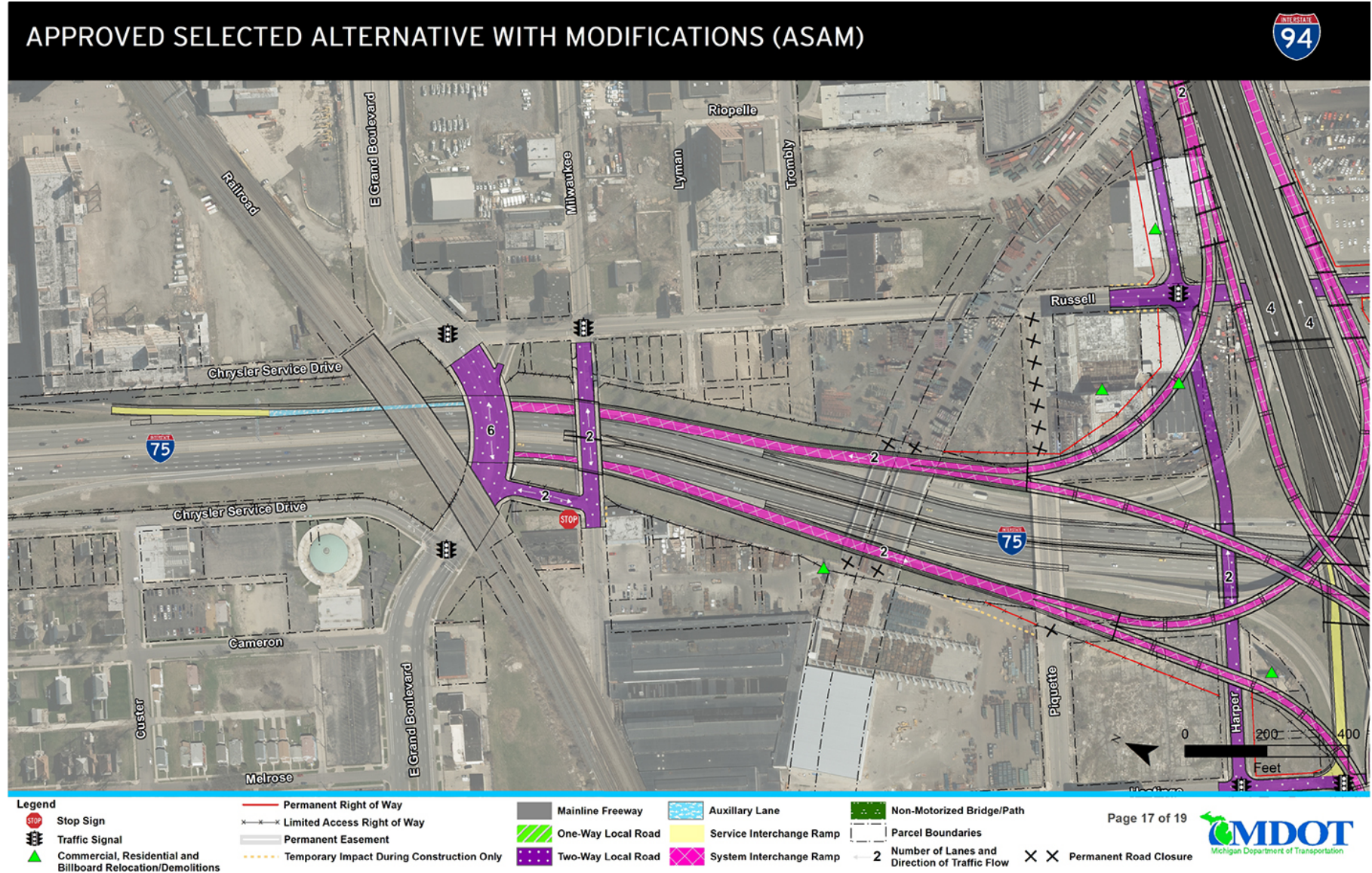


## APPROVED SELECTED ALTERNATIVE WITH MODIFICATIONS (ASAM)



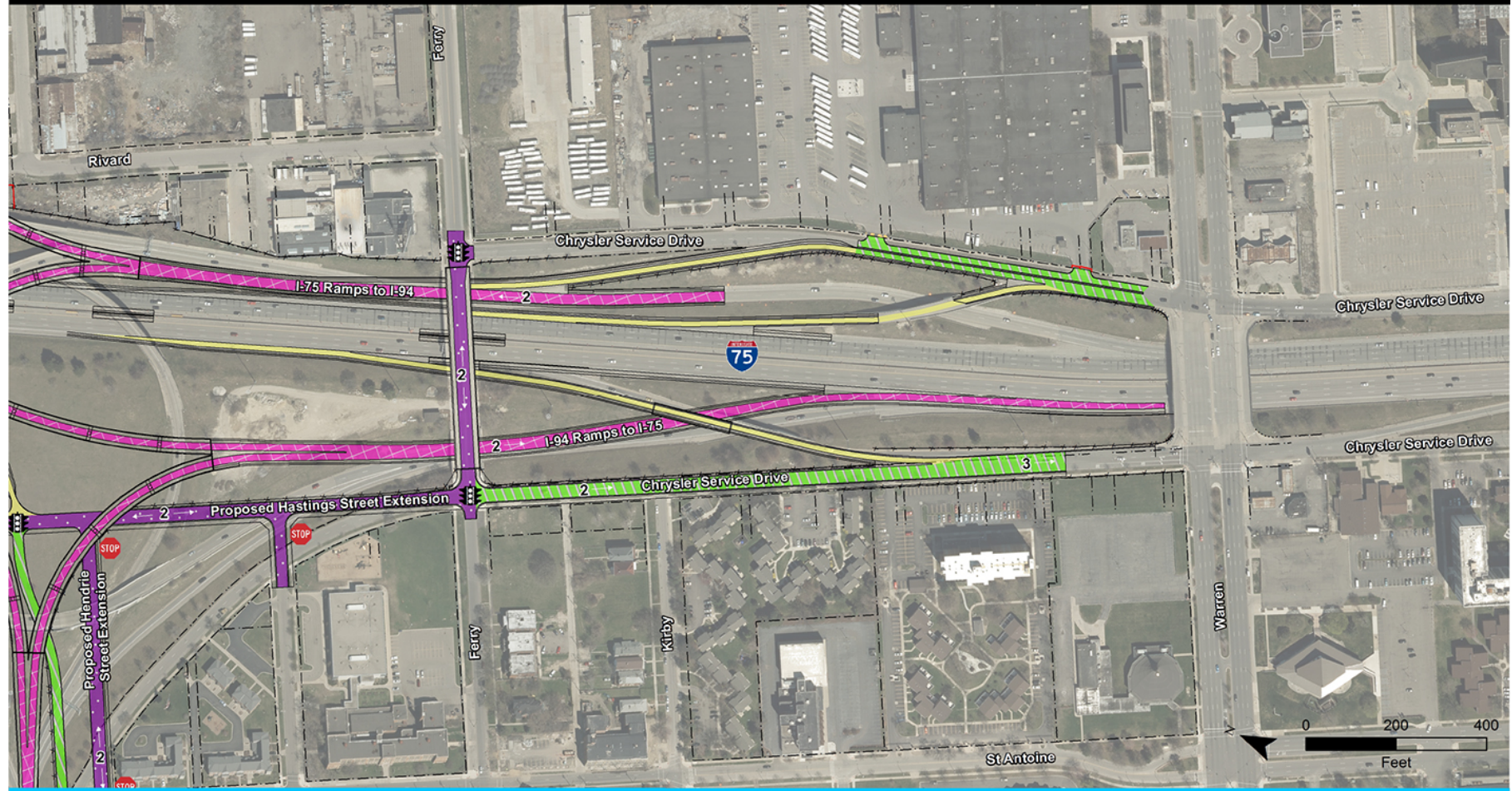


## APPROVED SELECTED ALTERNATIVE WITH MODIFICATIONS (ASAM)





## APPROVED SELECTED ALTERNATIVE WITH MODIFICATIONS (ASAM)



### Legend

- |  |   |                    |                          |   |
|--|---|--------------------|--------------------------|---|
| Stop Sign  | Permanent Right of Way                    | Mainline Freeway   | Auxiliary Lane           | Non-Motorized Bridge/Path                     |
| Traffic Signal   | Limited Access Right of Way               | One-Way Local Road | Service Interchange Ramp | Parcel Boundaries                             |
| Commercial, Residential and Billboard Relocation/Demolitions | Permanent Easement                        | Two-Way Local Road | System Interchange Ramp  | Number of Lanes and Direction of Traffic Flow |
|  | Temporary Impact During Construction Only |                    |                          | Permanent Road Closure                        |

Page 18 of 19



# APPROVED SELECTED ALTERNATIVE WITH MODIFICATIONS (ASAM)

